



Fig. 1. Guercino, *Virgin and Child with the Infant John the Baptist* (c. 1615–16), oil on canvas; diam: 78/80 cm



Fig. 2. Guercino, *Virgin and Child with the Infant John the Baptist* (c. 1615–16), oil on canvas; 77.4 x 60.4 cm, Rome, Galleria Pallavicini, inv. no. 15



Fig. 3. Guercino, *Virgin and Child with the Infant John the Baptist* (c. 1615–16), oil on canvas; 74.9 x 58.4 cm, Houston, Museum of Fine Arts, Sarah Campbell Blaffer Foundation, inv. no. BF.1983.2





Fig. 4. Guercino, *Virgin and Child with the Infant John the Baptist* (c. 1615–16), pen and brown ink; 155 x 132 mm, Windsor Castle, Print Room, inv. no. RCIN 902554



Fig. 5. Guercino, *Virgin and Child with the Infant John the Baptist* (c. 1615–16), pen and brown ink, with grey wash, over black and red chalk; 145 x 143 mm, Vienna, Albertina, inv. no. 2317



Fig. 6. Guercino, *Virgin and Child with the Infant John the Baptist* (c. 1615–16), pen and brown ink, with brown wash; 120 x 127 mm, Amsterdam, Rijksmuseum, inv. no. RP-T-1948-135





Fig. 7. Guercino, *Virgin and Child with the Infant John the Baptist* (c. 1615–16), pen and brown ink, with brown wash; 171 x 125 mm, sold, Bonham's, London, 23 April 2008, lot 240

Fig. 8. Reversed image of Figure 7

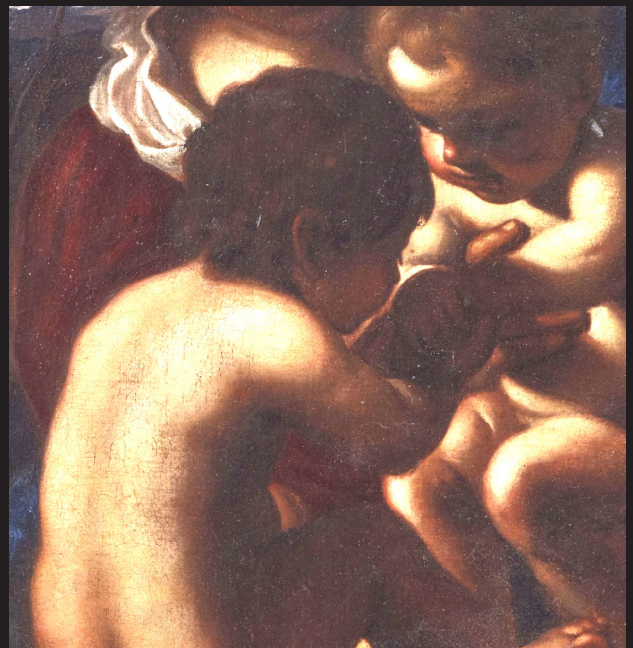


Fig. 9. Digitally lightened detail of Figure 1





Fig. 10. Guercino, *Holy Family* (c. 1615–16), oil on canvas; 56.5 x 75 cm, Florence, Palazzo Pitti, Galleria Palatina, inv. no. 132



Fig. 11. Guercino, *God the Father with a Winged Angel Supporting a Globe* (1620), oil on canvas; 67 x 91.7 cm, private collection



Fig. 12. X-ray of detail of Figure 11





Fig. 13. Guercino, *Virgin and Child with Sts. Joseph, Augustine, Louis and Francis with a Young Donor* (1616), oil on canvas; 309 x 192 cm, Brussels, Musées Royaux des Beaux-Arts de Belgique, inv. no. 198

Fig. 14. Guercino (copy after), *Virgin Teaching the Christ Child to Read (Mater Sapientiae)* (c. 1616), oil on canvas; 71.5 x 58 cm, Cologne, Wallraf-Richartz Museum, Fondation Corboud, inv. no. WRM 3389

Fig. 15. Reversed image of Figure 14

